



FLOOD DEFENDER RANGE

# UPVC DOOR

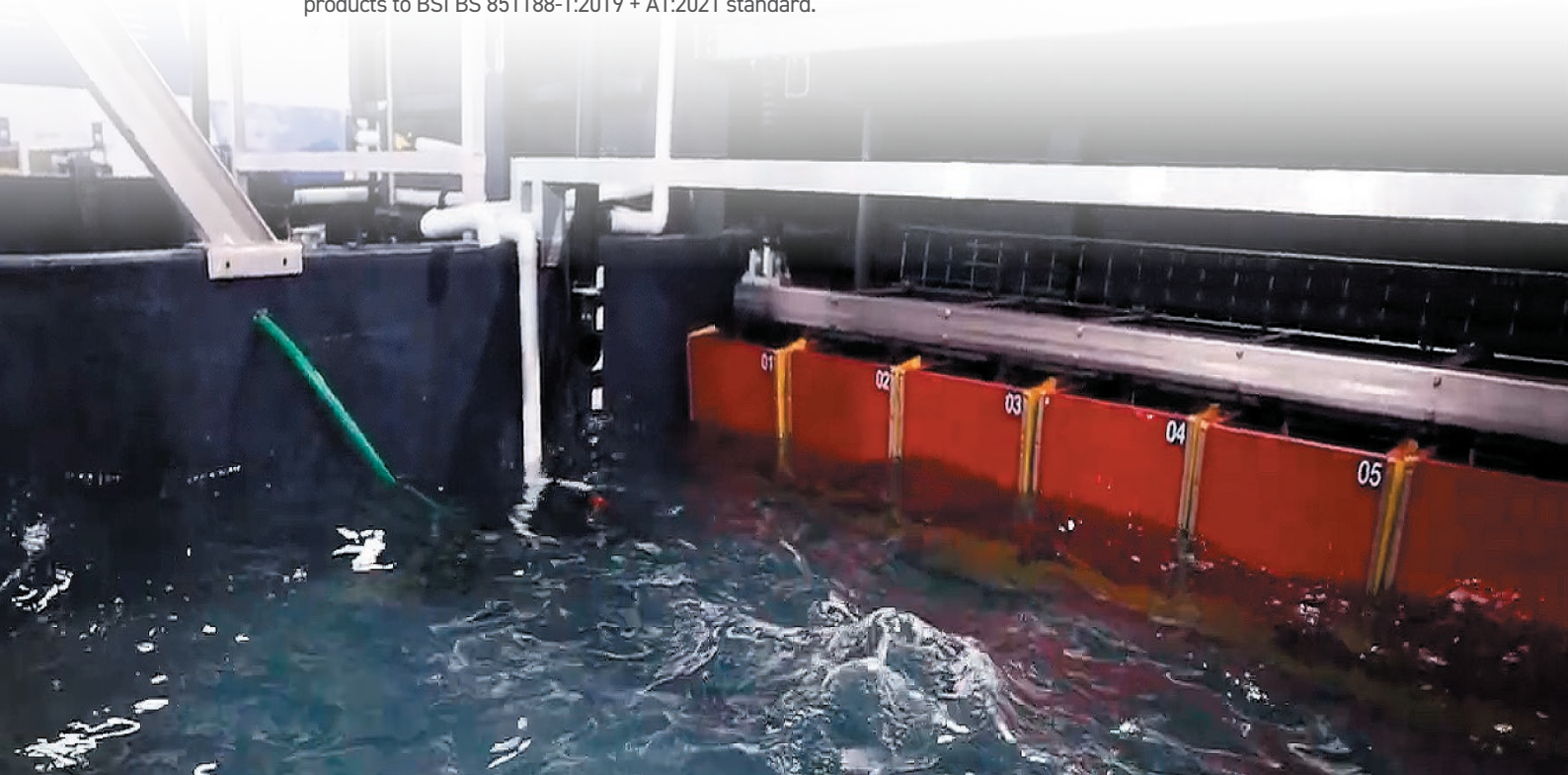
**BROCHURE 2022/23**



# ABOUT

M3 Floodtec provide flood resilience for Infrastructure, Industrial, Commercial and Residential properties. We aim to protect all potential areas of water ingress both above and below ground. Operating throughout the UK and Globally from our base in Droitwich with a suite of registered designs and patent protected flood defence products that are independently tested and proven to be flood resistant. All our products are specifically designed to keep flood water out of properties and away from critical infrastructure.

Our Worcestershire head office is home to a BSI approved Research & Development testing facility that is available to flood resilience manufacturers to test their products to BSI BS 851188-1:2019 + A1:2021 standard.



**Our UPVC Defender Door Range  
has been tested independently  
by BSI and is now Kitemark™  
Certified to the new British  
Standard and is also available  
with a Low Threshold.**





## WHY CHOOSE THE FLOOD DEFENDER UPVC DOOR?

**The Flood Defender Door is a highly engineered flood defence product. Visually and functionally, in non flood conditions, the door performs as a 'standard' PVC door.**

The door features a number of sophisticated internal components enabling the door to perform as a flood proof door to mitigate against rising flood waters up to a height of 600mm.

The Flood Defender Door can be manufactured as a bespoke item to a variety of widths and heights, and can incorporate both fully glazed panels as well as full or part PVC panels. Widths beyond a double patio door size can be incorporated by the inclusion of PVC or glazed side panels.

# THE DOOR RANGE



We have a contemporary range of UPVC Defender Door styles to suit your individual requirements.



**LEGACY**  
Optional Glass



**SANDMAN**  
Optional Glass



**WEATHERLY**  
Optional Glass



**NIKITA**  
Optional Glass



**WOODSTOCK**  
Optional Glass / Bullion



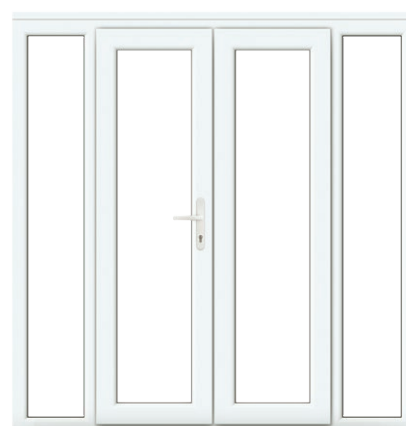
**SAPPHO**  
Optional Glass



**HIGHLANDER**  
Optional Glass



**NIRVANA**  
Optional Glass



**FRENCH DOOR** (*open out only*)  
Optional Glass

## GLASS DESIGNS

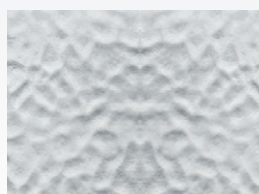
Choose from clear glass or our four backing glass options\*



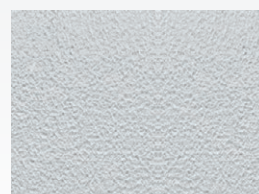
**AUTUMN**  
ALL DOOR DESIGNS



**COTSWOLD**  
ALL DOOR DESIGNS



**MINSTER**  
ALL DOOR DESIGNS



**STIPPOLYTE**  
ALL DOOR DESIGNS

\*Side Panels are available in Stippolyte / Minster / Cotswold / Autumn or Clear glass only.



## KEY FEATURES



### ENVIRONMENTALLY FRIENDLY

Committed to minimising our environmental impact, our PVC-U door panels feature a core material that is both CFC and HCFC free. Our panels are recyclable and in addition, manufacturing waste materials are disposed of responsibly wherever possible.

### THERMALLY EFFICIENT

Protected by Heat Reflective Technology, our coloured PVC-U door panels have a heat reflective skin which, when combined with an extra high density core, provides excellent insulation. This means your door does more than just look great; it also helps block noise and heat from entering or escaping your home.

### PLATINUM GLASS DOOR DESIGNS

These unique glass designs showcase bevels nestled between patterned backgrounds with coloured soldering joint lead-work.

The patterns are encased between two sheets of crystal clear glass for a unique smooth finish.



**SANDMAN**  
Astral Diamond



**SANDMAN**  
Platinum Legacy



**HIGHLANDER**  
Platinum Cluster



**HIGHLANDER**  
Astral Fleur de Lys

## BEVELLED GLASS DESIGNS

Choose from four door design specific bevelled glass options\*\*



**ASTRAL DIAMOND**  
SANDMAN DOOR DESIGN ONLY  
(plus backing glass)



**PLATINUM LEGACY**  
SANDMAN DOOR DESIGN ONLY  
(no backing glass)



**PLATINUM CLUSTER**  
HIGHLANDER DOOR DESIGN ONLY  
(no backing glass)



**ASTRAL FLEUR DE LYS**  
HIGHLANDER DOOR DESIGN ONLY  
(plus backing glass)

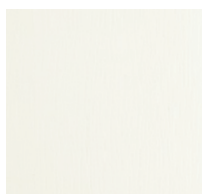
\*\*Bevelled glass is available in Sandman or Highland door design only.

# DOOR COLOURS

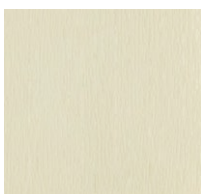
Choose from 9 woodgrain colour finishes\*.

Door frames are available in white finish as standard.

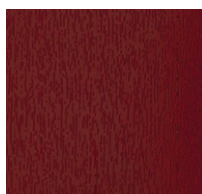
*\*Metallic Colours are not available.*



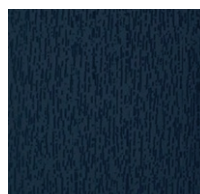
WHITE



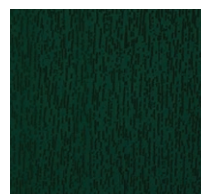
CREAM  
RAL 9001



RED  
RAL 3011



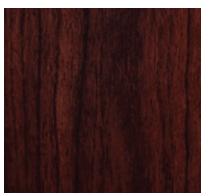
BLUE  
RAL 5011



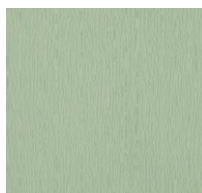
GREEN  
RAL 6009



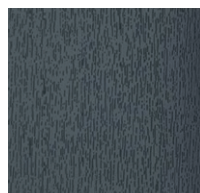
OAK



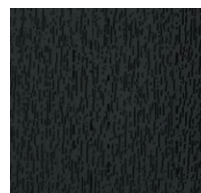
ROSEWOOD



CHARTWELL



ANTHRACITE  
RAL 7016



BLACK  
RAL 8022

# FURNITURE OPTIONS

Choose from four different finishes for handles & letterplates\*.

*\*Other handle designs are unavailable.*



CHROME



BLACK



WHITE



GOLD



SCROLL KNOCKER



URN KNOCKER\*

*\*with or without spyhole*

## Did you know we can also supply & install UPVC Flood Windows?

Call our Customer Care Team to enquire on 01905 676 467



### COST EFFECTIVE

Specially designed and fabricated to provide optimal sealing for reliable flood resilience. Defender flood windows are a cost effective option for building entrance screens and lower ground floor windows.

### PROVEN PERFORMANCE

Developed to meet the latest UK flood standards our flood defender window is Kitemark™ Certified to BS 851188-1:2019 + A1:2021 for both inward and outward opening units being the first of their kind to achieve this standard in the UK.



# DIMENSIONS

The table below shows the minimum & maximum door sizes available in each door style:

		Minimum Dimensions		Maximum Dimensions	
		Width (mm)	Height (mm)	Width (mm)	Height (mm)
PANEL NAME	Legacy	826	1750	1050	2100
	Sandman				
	Highlander				
	Nikita				
	Sappho				
	Weatherly	802	1750	1050	2100
	Nirvana	790	1750	1050	2100
	Woodstock	670	1750	1050	2100
	French Door	1200	1750	1800	2100



M3 Global Flood Technologies Ltd.  
9a Wassage Way, Hampton Lovett Ind Est  
Droitwich, Worcestershire WR9 0NX  
Tel: +44 (0)1905 676467  
Email: [sales@m3floodtec.com](mailto:sales@m3floodtec.com)

[www.m3floodtec.com](http://www.m3floodtec.com)