

Case Study

Flood Protection: **Stop Log Barriers**

Client: **Bayer Environmental Science**

37



Photo showing barriers being tested at M3 headquarters

Maintaining our rail network and keeping the tracks free of weeds requires a fleet of specialist system trains using state of the art GPS tracking and specialist herbicide spraying equipment to provide a more efficient weed control program across the network.

The innovative GPS tracking system automatically switches off the spray nozzles when the trains cross bridges or watercourses and when the units are standing therefore it was equally important to consider safe storage of the chemicals inside the wagons to prevent spillage.

With 3 specialist trains in operation, baulk storage of the herbicides inside the rolling stock could be up to 10,000l per train so containment in the event of any spillage was a fundamental consideration in the operation of these units.

The solution:

Bayer called on M3 Floodtec for design and installation of a bespoke flood containment system for each of the 3 trains protecting the access roller shutter doors on either side of the wagons and access ways into and out of the carriages.

Maintaining the water tight seals on a unit that is designed to flex in all directions, as the wagons travel along the rails, required a new flood seal design but water testing on completion proved that liquids were retained and secured inside the spray units.



Photo showing barriers installed on carriage

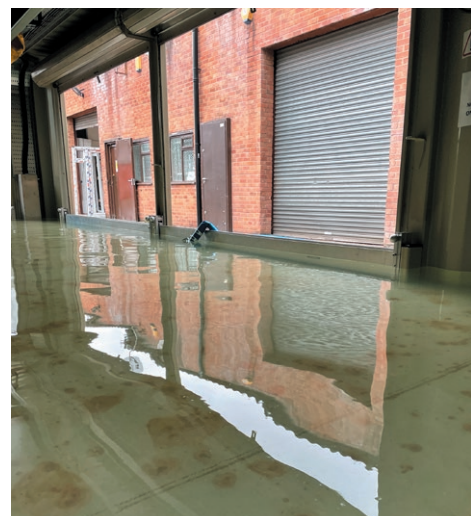


Photo showing water heights over 350mm during testing with zero leakage